

U.S. \$6.99

GUITAR

32423043

The Best Of

# SAMMY NESTICO

For Young Jazz Ensemble  
featuring 12 complete arrangements



# **THE BEST OF SAMMY NESTICO**

**(For Young Jazz Ensemble)**

## **CONTENTS**

<b>TITLE</b>	<b>PAGE</b>
First Wish	2
Do Nothin' 'Till You Hear From Me	3
Good News!	4
Martinique	6
Satin Doll	8
88 Basie Street	10
A Little Blues, Please	12
Just In Time	14
Odyssey	16
On The Sunny Side Of The Street	18
St. Louis Blues	20
Sugar Valley	22

Copyright © 1994 by HAL LEONARD CORPORATION  
International Copyright Secured All Rights Reserved

For all works contained herein  
Unauthorized copying, arranging, adapting, recording or public performance is an infringement of copyright  
Infringers are liable under the law

 **HAL•LEONARD®**  
CORPORATION

7777 W. BLUEMOUND RD., P.O. BOX 13819 MILWAUKEE, WI 53213



# FIRST WISH

GUITAR

By SAMMY NESTICO

**BALLAD**  
*Eb* 1009

*B7/Eb* *Abma7/Eb* *Db7/Eb*

5 *Eb* *ma7* *Eb* *Gmi7/C* *C7(b9)* *Fmi9* *Fmi9/Bb* *bb7(b9)* *Ebma9* *Eb*

6 *A7(#9)* *Ab9* *Fmi7/B* *G+7(b9)* *Cmi* *B+*

10 *Cmi/Bb* *Cmi/A* *D7(b9)* *Gma9* *Gmi7/C* *C7(b9)* *Fma9*

15 *Fmi7/Bb* *Bb7(b9)* *Ebma7* *Eb* *Gmi7/C* *C7(b9)* *Fmi* *(ma7)* *Fmi7* *Fmi7/Bb* *bb7*

20 *Dmi9* *Dmi7/G* *G7(b9)* *Cmi7* *B7(#9)* *Bmi7* *A7(b5)* *Ab* *Abma7* *Ab*

25 *Ami7(b5)* *D7(b9)* *Gmi* *(ma7)* *Gmi7* *C+7(b9)* *F13* *F9* *Fmi7/Bb* *Abmi/Bb*

30 *Eb* *B7/Eb* *Abma7/Eb* *Db7/Eb*

35 *Ab* *Abma7* *Ab* *Ami7(b5)* *D7(b9)*

40 *Gmi* *ma7* *Gmi7* *Gmi9/C* *C7(b9)* *Fmi* *ma7* *Ami7/Bb* *Bb7(b9)* *Eb(1009)*

46 *B7* *Abma7* *Db7* *Eb9(1009)*

51

# DO NOTHIN' TILL YOU HEAR FROM ME

Words by BOB RUSSELL  
Music by DUKE ELLINGTON  
Arranged by SAMMY NESTICO

## GUITAR

*DIRECTED SLOWLY* (3) *ATEMPO-BALLAD*

1-2 RIT. 3 *mf*

Chords:  $F_{maj}^7$ ,  $F_6$ ,  $C_{mi}^9$ ,  $F_{13}^{(b9)}$ ,  $B_{mi}^7$ ,  $B_b$ ,  $E_{b13}$

7  $F$ ,  $D_{(b9)}^7$ ,  $D_{(b9)}^7$ ,  $G_{(b9)}^7$ ,  $C^9$ ,  $F$ ,  $G_{mi}^7$ ,  $B_{mi}^7$ ,  $F$ ,  $F_{mi}^7$ ,  $B_{mi}^7$ ,  $A_{mi}^7$ ,  $C_{13}^{(b9)}$

12  $C_{mi}^9$ ,  $F_{13}^{(b9)}$ ,  $B_{mi}^7$ ,  $B_b$ ,  $E_{b13}^{(+11)}$ ,  $F^{(add9)}$ ,  $A_{b13}$ ,  $G_{13}^{(b9)}$ ,  $C_{13}$

17  $F_9$ ,  $A_{b9}$ ,  $F_9$ ,  $E_{b9}$ ,  $F_9$ ,  $G_{b/A}^9$ ,  $A_{b13}^{(b9)}$ ,  $D_{mi}^9$ ,  $B_{mi}^7$ ,  $E_{mi}^7$ ,  $A_{b13}$

21  $D_{mi}^7$ ,  $E_{mi}^7$ ,  $F_{mi}^7$ ,  $G_{mi}^9$ ,  $F_{mi}^9$ ,  $D_{mi}^9$ ,  $F/A$ ,  $E_{b9}$ ,  $D^9$ ,  $G_{13}$ ,  $D_{b9}$ ,  $G_{mi}^7$ ,  $C_{13}^{(b9)}$

(27)  $F_{mi}^7$ ,  $F_6$ ,  $C_{mi}^9$ ,  $F_{13}^{(b9)}$ ,  $B_{mi}^7$ ,  $B_b$ ,  $E_{b13}$ ,  $F^{(add9)}$ ,  $A_{b13}$

32  $G_{13}^{(b9)}$ ,  $C_{13}$ ,  $F$ ,  $E_{b13}^{(b9)}$ ,  $E_{b13}$ ,  $A_{b13}$ , (35)  $D_{mi}^7$ ,  $B_{mi}^9$ ,  $E_{mi}^9$ ,  $A_{b13}$

37  $D_{mi}^7$ ,  $E_{mi}^7$ ,  $F_{mi}^7$ ,  $G_{mi}^9$ ,  $F_{mi}^9$ ,  $D_{mi}^7$ ,  $F/A$ ,  $E_{b9}$ ,  $D^9$ ,  $G_{13}$ ,  $D_{b9}$ ,  $C^9$

(43)  $F_{mi}^7$ ,  $F_6$ ,  $C_{mi}^9$ ,  $F_{13}^{(b9)}$ ,  $B_{mi}^7$ ,  $B_b$ ,  $E_{b13}^{(+11)}$ ,  $F/A$ ,  $E_{b9}$ ,  $D^9$

48  $G_{(b9)}^7$ ,  $C_{13}$ ,  $G_{mi}^7$ ,  $B_{mi}^7$ ,  $F_{mi}^7$ ,  $B_{mi}^7$ ,  $F_{mi}^7$

MOVE IT!

54  $B_{mi}^7$

55  $F_{mi}^7$



# GOOD NEWS!

GUITAR

By SAMMY NESTICO

EASY JAZZ FEEL  $\text{♩} = \text{♩} \text{♩}$

Handwritten guitar chord chart for the song "GOOD NEWS!". The chart is written in a key signature of two flats (Bb and Eb) and a 4/4 time signature. It consists of ten staves of music, each with a treble clef and a key signature of two flats. The chords are written above the staff lines, and the fret numbers for the left hand are written below the staff lines. The chords are: Cm7, Ebm16, Dm7, Gm7, C13, C9, Cm7, B0, Ab/C, F7(b9), Bb, G13(b9), Cm9, F13(b9), Bb6/9, B0, Cm7, F7, Cm7, F7(b9), Bb6/9, Dm7, G7, Dm7, G7(b9), Cm7, Eb0, Bb6/9, D0, Cm7, A7(b9), Dm7, D0, Cm9, F13(b9), Bb6/9, Cm7, C#0, Bb, B0, Cm7, F7, Ab/C, F7, Bb6/9, Bb, A9, Bb6/9, Dm7/G, G7, G9, Ab9, G9, Db9, Cm9, Ebm7, Dm7, Gm7, C13, C9, Cm7, F13, Dm7, G+7(b9).

GUITAR

Handwritten guitar chord notation for a piece in B-flat major. The notation is organized into systems of two staves each, with measure numbers and dynamic markings.

**System 1 (Measures 41-48):**

- Measure 41: *chase*,  $B^{\circ}$
- Measure 42:  $A\flat/C$
- Measure 43:  $F13(b9)$
- Measure 44:  $B\flat$
- Measure 45:  $G+7(b9)$
- Measure 46:  $C9$
- Measure 47:  $F+7(\sharp 9)$
- Measure 48:  $B\flat$

**System 2 (Measures 49-56):**

- Measure 49:  $B\flat 9$
- Measure 50:  $E\flat^{\circ}$
- Measure 51: *BUILDING*,  $Dm7$ ,  $G9$
- Measure 52:  $Dm7$ ,  $G9$
- Measure 53:  $Cm7$
- Measure 54:  $Dm7$ ,  $B\flat$
- Measure 55:  $Dm7$ ,  $B\flat$
- Measure 56:  $D\flat^{\circ}$

**System 3 (Measures 57-64):**

- Measure 57: *mf*,  $Cm7$
- Measure 58:  $A7(b9)$
- Measure 59: *f*,  $Dm7$ ,  $G9$
- Measure 60:  $Cm9$ ,  $F13(b9)$
- Measure 61:  $B\flat 9$
- Measure 62:  $B\flat 9$ ,  $A6 9$ ,  $B\flat 9$ ,  $B^{\circ}$
- Measure 63:  $Cm7$ ,  $F7$
- Measure 64:  $Cm7$ ,  $G\flat 9$ ,  $F9$

**System 4 (Measures 65-72):**

- Measure 65:  $B\flat 9$
- Measure 66:  $A6 9$ ,  $B\flat 9$
- Measure 67:  $Dm7$ ,  $G9$
- Measure 68:  $G13$ ,  $A\flat 13$ ,  $G13$ ,  $D\flat 9$
- Measure 69:  $Cm9$
- Measure 70:  $E\flat m1 b$
- Measure 71:  $Dm7$ ,  $Gm7$
- Measure 72:  $C13$ ,  $C7$

**System 5 (Measures 73-80):**

- Measure 73:  $Cm7$
- Measure 74:  $F13$
- Measure 75:  $Dm7$
- Measure 76:  $G+7(b9)$
- Measure 77:  $Cm9$ ,  $B^{\circ}$
- Measure 78:  $A\flat/C$
- Measure 79:  $F13(b9)$ ,  $B\flat$
- Measure 80:  $F7(\sharp 9)$



# martinique

By SAMMY NESTICO

## GUITAR

(LIGHT LATIN)

Handwritten guitar notation for the piece "martinique" by Sammy Nestico. The score is written in treble clef with a key signature of two flats (Bb, Eb) and a 3/4 time signature. It consists of 38 measures, with some measures containing slurs and accents. The notation includes various chords and melodic lines.

Chords and notes written above the staffs include:

- Measures 1-6: CM1(ADD9), AbMA9, CM1(ADD9)
- Measures 7-11: FM19/Bb, Eb(ADD9), Eb, EbMA7/G, Eb/G, Ab(ADD9), Ab
- Measures 12-16: AbMA7, Abb, FM19, D7(b9), EbMA7, A7(b9)
- Measures 17-20: FM1/D, G7(b9), CM1(ADD9), CM1, CM1(MA7), CM17
- Measures 21-25: F9(11), FM17/Bb, Eb(9), Eb(ADD9), Eb
- Measures 26-29: EbMA7/G, Eb/G, Ab(ADD9), Ab, AbMA7, Abb, FM19
- Measures 30-34: FM19/Bb, Bb/Ab, G13, Db9, GM17/C, C+7(b9), F13, B9, FM17/Bb, Bb13(14)
- Measures 35-38: Eb, Ab, Eb7, Eb, D7, Db7

Other markings include "mp" (mezzo-piano) at measure 1, "SIM." (simulazione) at measures 10, 17, and 35, and circled measure numbers 9, 17, 25, and 35.

GUITAR

C7 FMI FM17/Bb (43) Eb(ADD9) Eb

G7(b9) G7(b9) G7 Ab6/4 DM17(b5) G7(b9)

CM1 B9 Eb/Bb B7/Bb

FM17/Bb EMA7/Bb (57) Eb(ADD9) Eb

EBMA7/G Eb/G Ab(ADD9) Ab AbMA7 Ab6 FM19 FM19/Bb Bb/Ab

G13 Db9 GM17/C C7(b9) F13 B9 FM17/Bb Bb13(b9)

Eb EbSUS Eb C7SUS C7 (6A) F(ADD9) F FMA7/A F6/A Eb(ADD9) Bb

BbMA7 Bb6 GM16 GM19/C C/Bb A13 Eb9

Am17/D D7(b9) G13 Db9 GM17/C (DIRECTED-SLOWLY) 2

Eb6/4 DM19 Ab(ADD9) F(ADD9)



## satin doll

By DUKE ELLINGTON  
Arranged by SAMMY NESTICO

## GUITAR

JAZZ SHUFFLE (♩=116-120) ♩ =

5  $C_{mi}9$   $F9$   $D_{mi}7$   $G9$   $C9$

10  $B9$   $Bb_{ma}7$   $G13(b9)$  ( $D\flat7/G$ )  $C_{mi}9$   $F9$

15  $D_{mi}7$   $G9$   $C9$   $B9$   $B\flat$   $E\flat$   $E\flat$

20  $B\flat$   $C_{mi}7$   $D\flat$   $B\flat$   $F_{mi}7$   $B\flat9$   $E\flat_{mi}7$   $E_{mi}7$   $G_{mi}7$   $E_{mi}7$   $E\flat_{mi}7$   $D_{mi}7$   $E_{mi}7$

25  $G_{mi}7$   $C9$   $F9$   $G\flat9$   $A\flat9$   $G\flat9$   $F9$   $G7(b9)$   $C_{mi}9$   $F9$

30  $C_{mi}9$   $F9$   $D_{mi}7$   $G9$   $C9$   $B9$

35  $B\flat$   $E\flat$   $G_{mi}7$   $E_{mi}7$   $B\flat$   $G7(b9)$   $C_{mi}7$   $F13$   $D_{mi}7$

40  $G13$   $C13$   $B13(\sharp11)$   $Bb_{ma}7$   $G7(b9)$

45  $C_{mi}7$   $F13$   $D_{mi}7$   $G13$   $C9$

Handwritten guitar chord chart with 15 staves. The chart includes various chord notations such as B9, Bb6/9, Fmi9, Bb13(b9), Ebma7, Gmi9, C13(b9), Cmi7, F9, G7(b9), Cmi7, F9, Dmi7, G9, C9, B9, Bb, G7(b9), Cmi9, F13, Cm9, F13, Dmi9, G13, C9, B9, Bb6/9, G7(b9), Bb6/9, Fmi7, Bb7, Ebma7, Ebb, Gmi7, C7, Cm7, F7, G7(b9), Cm9, F13, Dmi9, G13, Dmi9, G13, C13, B13, Bb6/9, G13(b9), Cm9, F13, Dmi9, G13, C13, B13, Bbma7, Ab9, G9, C9, B13, D7(#9), G13, C7(#9), Ebmi7/F, Bb [OPT.], D7(#9), Db7(#9), C7(#9), B7(#9), Bb7(#9).

Staff 1: B9, Bb6/9, (S3) Fmi9, Bb13(b9)

Staff 2: Ebma7, Gmi9, C13(b9), Cmi7

Staff 3: F9, G7(b9), (G1) Cmi7, F9, Dmi7, G9

Staff 4: C9, B9, Bb, G7(b9), (G9) Cm9, F13

Staff 5: Cm9, F13, Dmi9, G13, C9, B9

Staff 6: (1) Bb6/9, G7(b9), (2) Bb6/9, (T9) Fmi7

Staff 7: Bb7, Ebma7, Ebb, Gmi7, C7

Staff 8: Cm7, F7, G7(b9), (B7) Cm9, F13, Dmi9, G13

Staff 9: Dmi9, G13, C13, B13, Bb6/9, G13(b9)

Staff 10: (95) Cm9, F13, Dmi9, G13, C13

Staff 11: B13, Bbma7, Ab9, G9, C9, B13

Staff 12: D7(#9), G13, C7(#9), Ebmi7/F, Bb [OPT.], D7(#9), Db7(#9), C7(#9), B7(#9), Bb7(#9)

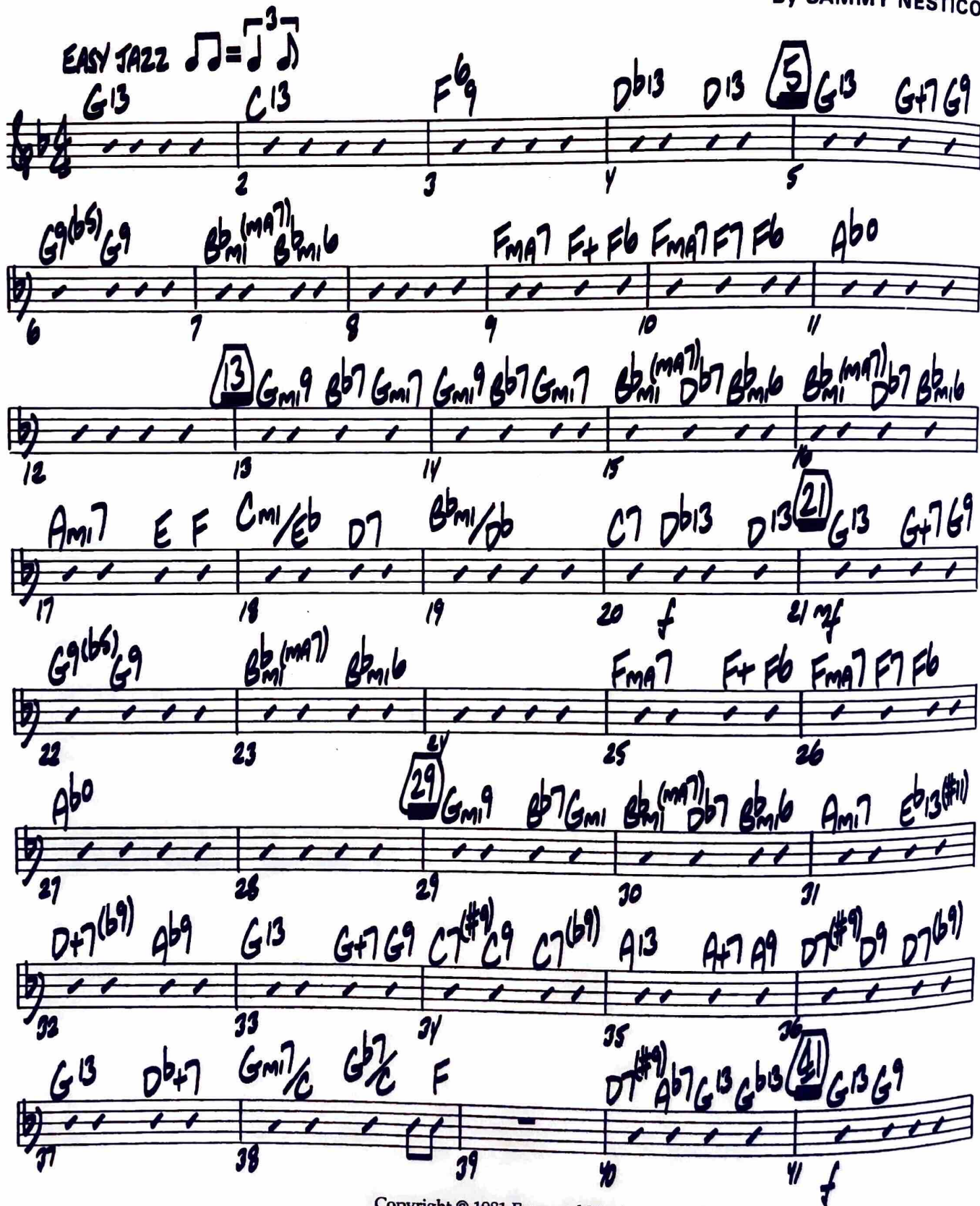


# 88 BASIE STREET

GUITAR

By SAMMY NESTICO

EASY JAZZ 



Handwritten guitar tablature for "88 Basie Street" by Sammy Nestico. The piece is in 4/4 time and features a "Easy Jazz" feel. The notation includes fret numbers (1-5) and various chord voicings such as G13, C13, Fb9, Db13, D13, G13, G+7 G9, G9(b9) G9, Bmi(ma7) Bmi6, Fma7 F+ Fb Fma7 F7 Fb, Abo, Gmi9 Bb7 Gmi7, Gmi9 Bb7 Gmi7, Bmi(ma7) Db7 Bmi6, Bmi(ma7) Db7 Bmi6, Ami7, E, F, Cmi/Eb, D7, Bmi/Db, C7, Db13, D13, G13, G+7 G9, G9(b9) G9, Bmi(ma7) Bmi6, Fma7, F+ Fb, Fma7, F7, Fb, Abo, Gmi9, Bb7, Gmi, Bmi(ma7) Db7 Bmi6, Ami7, Eb13(#11), D+7(b9), Ab9, G13, G+7 G9, C7(#9), C9, C7(b9), A13, A+7 A9, D7(#9), D9, D7(b9), G13, Db+7, Gmi7/C, Gb7/C, F, D7(#9), Ab7, G13, Gb13, G13, G9.

Handwritten guitar chord chart with 12 staves and measure numbers 42-80. The chart includes various chord voicings and some circled numbers (57, 65) indicating specific fret positions.

Staff 1: 42 FMA7 Fb FMA7 Fb Abo 43 Bbmib 44 45 FMA9 Fb

Staff 2: 46 Gmi9 Bb7 Gmi7 47 Bbmi(ma7) Db7 Bbmib 48 Bbmi(ma7) Db7 Bbmib Ami7 E F 49

Staff 3: 50 Cmi/Eb D7 51 Bbmi/Db 52 C13(b9) Db13 D13 53 (57) G13 Gb9 G9 G13

Staff 4: 54 Gb9 G9 55 Bbmi(ma7) Bbmib 56 Bbmi7 FMA7 57

Staff 5: 58 59 Abo 60 (65) Gmi9 Bb7 Gmi 61

Staff 6: 62 Bbmi(ma7) Db7 Bbmib 63 Ami7 Eb13(#11) D+7(b9) Ab9 G13 G+7 G9 64 65 f

Staff 7: 66 C7(#9) C9 C7(b9) 67 A13 A+7 A9 D7(#9) D9 D7(b9) G13 Db+7 68 69

Staff 8: 70 Gmi7/C Gb7/C F F D7(#9) G13 C7(#9) F F E Eb 71 72 73

Staff 9: 74 D E E F 75 76 77 Ab Bb F(ADD9)

Staff 10: 78 79 80 p





GUITAR

33 A7 Ab7 Eb7 D7 Db7 C7 B7 Bb7 A7 Ab13

(Ab13) D7 Eb7 A7

Bb7 A7 Ab7

B7 C7 Db7 D7 Eb Gb F E Eb Gb F E Eb Gb F E

Eb Gb F E (50) Eb Gb F E

Eb Eb7 D/F Eb/G Ab B Bb A Eb Gb F E

Eb Ab7 A7 Bb7 A7 Ab7 G7 Ab7 A7 Bb7 A7

Ab7 G7 Ab7 A7 Bb7 A7 Ab7 Eb7 (#9)

D7 (b9) Db9 C7 (#9) F7 (b9)

Fm7/Bb Eb7 Eb



# JUST IN TIME

(From "BELLS ARE RINGING")

Words by BETTY COMDEN and ADOLPH GREEN

Music by JULE STYNE

Arranged by SAMMY NESTICO

## GUITAR

EASY JAZZ FEEL (♩ =  $\sqrt[3]{\text{♩}}$ )

The sheet music is written for guitar in 4/4 time with a key signature of two flats (Bb and Eb). It consists of eight staves of music. The first staff begins with a treble clef, a key signature of two flats, and a 4/4 time signature. The tempo/style is indicated as 'EASY JAZZ FEEL' with a note value of a quarter note equal to the cube root of a quarter note. The first measure starts with a dynamic marking of *mf*. The music features a mix of eighth and quarter notes, with some triplet markings. Chord symbols are written above the staff, including Bbm1, C7, F7, Bb7, and G7. Measure numbers 1 through 34 are indicated at the beginning of each line. A box around the number 9 indicates a repeat sign. A box around the number 17 indicates a repeat sign. A box around the number 25 indicates a repeat sign. The music ends with a double bar line at measure 34.

Copyright © 1956 by Betty Comden, Adolph Green and Jule Styne  
Copyright Renewed

This arrangement Copyright © 1991 by Betty Comden, Adolph Green and Jule Styne  
Stratford Music Corporation, owner of publication and allied rights throughout the world  
Chappell & Co., Administrator

International Copyright Secured All Rights Reserved

GUITAR

35 Eb9 D7 36 Bbm7/D C7 37 F13 E13 F13 B+7 Fm13/Bb Bb7 (b9)

39-42 A 43 Ebma7 Dma7 Ebma7 Dma7 Ebma7 F#13

45 G13 F#13 G13 46 Bbm7/D C7 47 F13 48 F+7 F7 49

50 F7 F13 51 Bb13 B9 Bb9 B9 Bb13 E9 Eb13 D13 Eb13 52 53 54

55 Ab13 G13 Ab9 56 Db Db+ Db6 G7(b9/b5) G7 57 58 f

59 Cmi (A009) B+ Cm1/B F7 F#0 60 61 62

63 Eb9/bb 64 C+7(#9) C+7 C+7(b9) C7 C+7 65 66 67 F9 68 mf

69 Bb9 Eb D7 Bbm7/D C7 70 F13 E13 F13 B+7 71

72 Fm13/Bb Bb7 (b9) Abm13/D 73 74 75 # mp 76 77 78 Gb9

79 G69 80 C69 81 Gb9



# ODYSSEY

GUITAR

By SAMMY NESTICO

ROCK

$Bb^{\wedge}$

$Fm7$   $Bb7$   $Eb^{\wedge}$

$Eb$   $E^{\circ}$   $Bb$   $D7$   $Gm1$   $C7$   $A13(b9)$   $A^{\flat}13$   $G13$   $C7(b9)$   $F+7(b9)$

9 10 11 12

13

8

13-20

21

8

21-28

29

8

29-36

37

8

37-44

45

$Eb$   $E^{\flat}/A$   $Gm1$   $Gm1/F$   $Gm1/E$   $E^{\flat}MA7$   $Dm17$   $Cm17$   $G^{\flat}$

45 46 47 48

Handwritten guitar tablature with chord diagrams and chord names. The page contains 10 systems of music, each consisting of a staff with notes and a corresponding staff with fret numbers and chord symbols.

**System 1:** Chords: Eb/F, D7/F#, Gmi, Db9, C9, Gb7, F7, Ab, A. Fret numbers: 50, 51, 52.

**System 2:** Chords: Eb, Eb/A, Gmi, Fmi, Bb, EbMA7, D7. Fret numbers: 53, 54, 55, 56.

**System 3:** Chords: Eb, E0, Bb, D7, Gmi, Db7, C7(b9), F7, F47, Bb. Fret numbers: 58, 59, 60.

**System 4:** Chords: Eb, Eb/A, Gmi, Gmi/F, Gmi/E, E0, Dmi, Gmi, Fmi7/Bb. Fret numbers: 61, 62, 63, 64, 65, 66, 67, 68.

**System 5:** Chords: Eb, D7, Gmi, Db9, C9, Gb9, F7, Ab, A. Fret numbers: 70, 71, 72, 73, 74, 75, 76.

**System 6:** Chords: Eb, Fmi7, Bb7, Eb. Fret numbers: 77, 78, 79.

**System 7:** Chords: Eb, E0, Bb, D7, Gmi, C7, A13(b9), Ab13, G13, C7(#9), F+7(b9). Fret numbers: 81, 82, 83, 84, 85.

**System 8:** Chords: Eb, D, Db, BMA7, A, Bb. Fret numbers: 86, 87.

Additional markings include a dynamic marking 'f' and a double bar line at the end of the piece.



# on the sunny side of the street

Words by DOROTHY FIELDS  
 Music by JIMMY McHUGH  
 Arranged by SAMMY NESTICO

GUITAR

RELAXED JAZZ FEEL (♩ = 104)

The sheet music is written for guitar in a key with two flats (Bb and Eb) and a 4/4 time signature. It consists of 11 staves of music, each with a treble clef and a key signature of two flats. The music is marked with a tempo of 104 beats per minute and a 'RELAXED JAZZ FEEL'. The notes are mostly rests, with some rhythmic patterns indicated by slanted lines. Chord symbols are written above the staves, including D7, Am/D, Eb, F13, F#0, Gmi7, C13, Cm17, F7, Bb, Cm17/F, Bb, D7, Eb, F13, F#0, Gmi7, C13, B9, C9, Cm17, F7(b9), Bb, A7D7, G7, C7, F7, Bb, Fmi7, Bb9, EbMA9, Eb6, C13, Db9, C9, F, Bb, F7, Bb, F7, Bb, F, Cm17/F, Bb (add 9), D7, Eb6, F13, F#0, Gmi7, C9, Db9, C9, Cm17/F, Bb, G7(b9), C7(b9), F7(b9), Bb6, D9, EbMA7, F13, F#0, Gmi. A circled number 37 is placed above the first staff of the final system. The piece ends with a forte (f) dynamic marking.

GUITAR

Handwritten guitar chord chart with 12 staves. The chart includes various chords such as C13, Cm17/F, Bb, G7(b9), C7(b9), F7(b9), BbMA7, A0/Bb, Bb6, D9, Eb9, D9, Eb, F13, F#0, Gmi7, C13, Cm17/F, F7, Bb, Bb7, Bb0, Ebmi6, Bb7, Ebmi6, Bb7, Eb6, Eb0, F0/Eb, Eb, F0/Eb, Eb, C9, Gmi7, Gmi7, Db9, C9, F7, Bb, F7, Ebmi7Ab, Ab7, Ebmi7Ab, Db6, Gb, Db, F7, Gb, Ab9, A0, Bbmi7, Eb9, E9, Eb9, Ebmi7, Ebmi7Ab, Ab/Gb, Fmi7, Bb7(b9), Ebmi7, A9, Ebmi7Ab, Db, B9, Bbmi7, Gbmi/A, Ab7sus, DbMA7, G7(b5), GbMA7, Cb9, Bbmi7, A7, Ab7sus, Db, Gb, Db, GbDb, E, Gb, Db, and Gb.

Measure numbers are indicated at the beginning of each staff: 42, 45, 48, 52, 55, 58, 61, 65, 69, 73, 77, 80.

Measure numbers are also indicated below the staves: 43, 44, 46, 47, 49, 50, 51, 53, 54, 56, 57, 59, 60, 62, 63, 64, 66, 67, 68, 70, 71, 72, 74, 75, 76, 78, 79, 81, 82.

Other markings include **(61)** in a box, **(53)** in a circle, and **(6)** in a circle. A **mf** dynamic marking is present above measure 61.



# ST. LOUIS BLUES

GUITAR

EASY JAZZ STYLE (♩ = ♩)

By W.C. HANDY  
Arranged by SAMMY NESTICO

Handwritten guitar notation for "St. Louis Blues" in 12/8 time, featuring a series of chords and melodic lines across 48 measures.

**Measures 1-4:** Chords: F<sup>6/9</sup>, G<sup>b6/9</sup>, F<sup>6/9</sup>, B<sup>13</sup>, B<sup>13</sup>, B<sup>b13</sup>

**Measures 5-10:** Chords: E<sup>b13</sup>, E<sup>13</sup>, E<sup>b13</sup>, D<sup>b9</sup>, G<sup>m7</sup>/C, 2

**Measures 11-14:** Chords: B<sup>b9</sup>, F(ADD<sup>9</sup>), D<sup>b7</sup>, C<sup>m7</sup>, F<sup>13</sup>(#11)

**Measures 15-20:** Chords: B<sup>b9</sup>, F(ADD<sup>9</sup>), E<sup>13</sup>(b9), E<sup>b13</sup>, D<sup>7</sup>(#9), D<sup>b9</sup>

**Measures 21-24:** Chords: C<sup>9</sup>, B<sup>9</sup>, B<sup>b9</sup>

**Measures 25-28:** Chords: G<sup>m7</sup>, G<sup>bma7</sup>, F

**Measures 29-32:** Chords: A<sup>b9</sup>, B<sup>7</sup>(#9), B<sup>b7</sup>, E<sup>7</sup>, E<sup>b7</sup>, C<sup>13</sup>(b9), F<sup>7</sup>(#9), B<sup>b13</sup>

**Measures 33-36:** Chords: E<sup>b9</sup>, E<sup>b13</sup>, E<sup>o</sup>, B<sup>b13</sup>, A<sup>13</sup>(b9), A<sup>b13</sup>, G<sup>+</sup>, G<sup>b13</sup>

**Measures 37-40:** Chords: F<sup>9</sup>, E<sup>9</sup>, E<sup>b9</sup>, C<sup>7</sup>(b9), F<sup>7</sup>, B<sup>b</sup>, D<sup>7</sup>(#9), G<sup>7</sup>(b<sub>5</sub>), C<sup>9</sup>, F<sup>7</sup>

**Measures 41-44:** Chords: B<sup>bmi</sup>, F/A, D<sup>b7</sup>/A<sup>b</sup>, G<sup>7</sup>, G<sup>b13</sup>, F<sup>9</sup>, G<sup>b13</sup>, F<sup>9</sup>, G<sup>b13</sup>, F<sup>9</sup>

**Measures 45-48:** Chords: F<sup>7</sup>, A<sup>o</sup>/F, F<sup>o</sup>, E<sup>o</sup>/F, F<sup>+</sup>(b9), B<sup>bmi</sup>, G<sup>7</sup>(b<sub>5</sub>), C<sup>7</sup>(b9), F<sup>+</sup>

GUITAR

Handwritten guitar chord notation across 12 staves. The notation includes various chords such as  $Bbmi$ ,  $F/A$ ,  $Db^7$ ,  $G^7(b5)$ ,  $Gb^7$ ,  $F$ ,  $Gb^9$ ,  $F^7$ ,  $Gb^9$ ,  $F^7$ ,  $D^0$ ,  $Eb^0$ ,  $E^0/F$ ,  $Eb^0/F$ ,  $F^0$ ,  $Ebmi/F$ ,  $Bbmi$ ,  $C^7$ ,  $F^7$ ,  $Bb^7$ ,  $Eb^7$ ,  $Ab^7$ ,  $Cmi^7$ ,  $Cmi^7/F$ ,  $Bb^9$ ,  $B^13$ ,  $Bb^9$ ,  $E7(\#9)$ ,  $Eb^7$ ,  $E^0$ ,  $Bb^13$ ,  $A^13(b9)$ ,  $Ab^13$ ,  $G^9$ ,  $Gb^7$ ,  $F^13$ ,  $E^13$ ,  $Eb^13$ ,  $Bb^6/9$ ,  $G^7(b5)$ ,  $C^9$ ,  $F^7$ ,  $Bb$ ,  $Eb$ ,  $Bb$ ,  $Eb^7$ ,  $Ab$ ,  $Eb^7$ ,  $Bb^9$ ,  $Eb$ ,  $Bb^9$ ,  $Eb^9$ ,  $Bb^9$ ,  $Eb$ ,  $Bb^9$ ,  $F^9$ ,  $E^9$ ,  $Eb^9$ ,  $Bb$ ,  $G^7(b5)$ ,  $C^+(b9)$ ,  $Eb/F$ ,  $Bb^9$ ,  $Eb^7$ ,  $E^0$ ,  $Bb^9$ ,  $E^0/F$ ,  $Eb^0/F$ ,  $Bb^9$ ,  $Eb^13(\#11)$ ,  $Eb^9$ ,  $E^0$ ,  $Bb^9$ ,  $Ab^9$ ,  $G^9$ ,  $F^9$ ,  $E^9$ ,  $Eb^9$ ,  $Bb^9$ ,  $B^9$ ,  $Bb^9$ ,  $Eb^13$ ,  $E^13$ ,  $Eb^13$ ,  $Ab^13$ ,  $A^13$ ,  $Ab^13$ ,  $C^+(\#9)$ ,  $F^+(\#9)$ ,  $(Cmi^7)$ ,  $B^7(\#9)$ ,  $Bb^6/9$ .

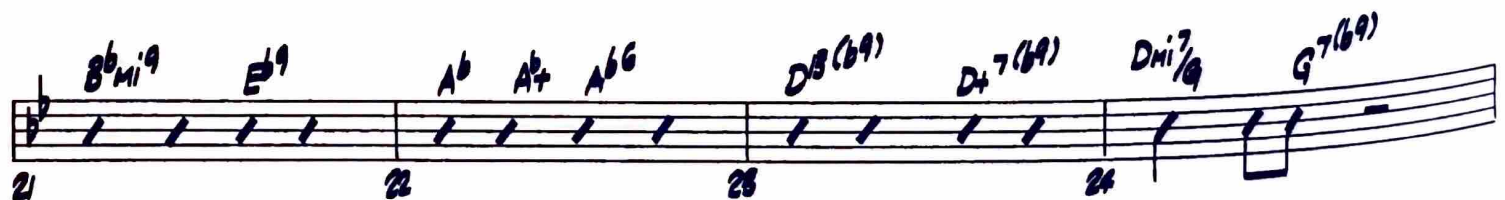
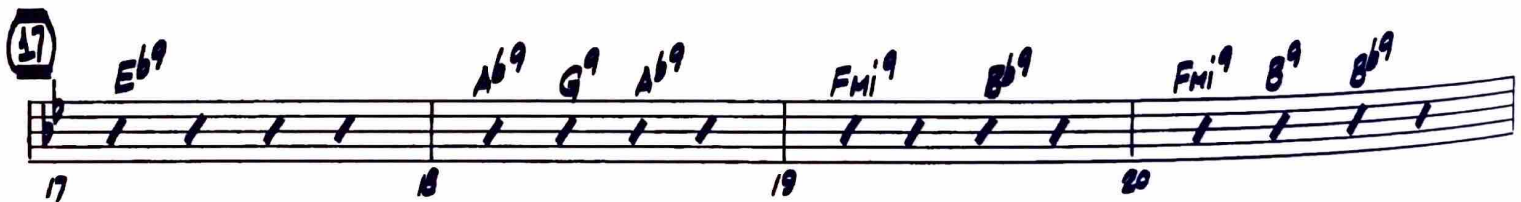
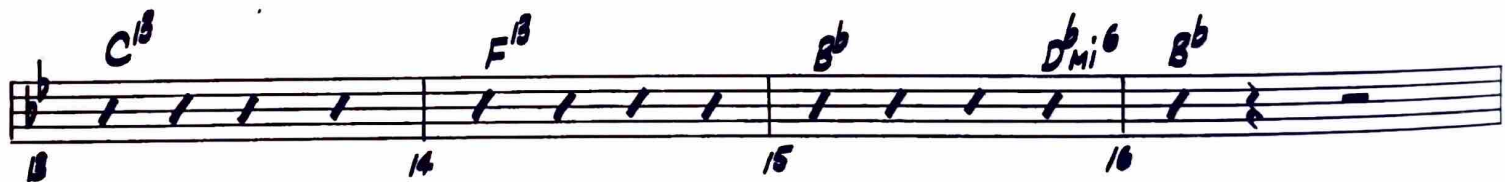
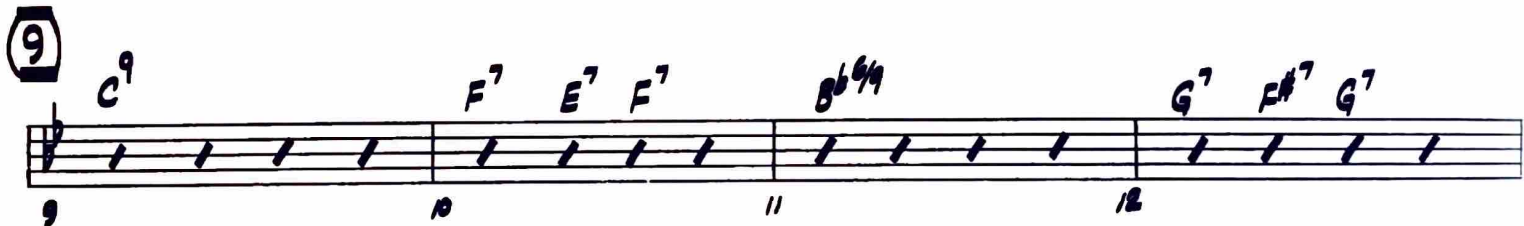
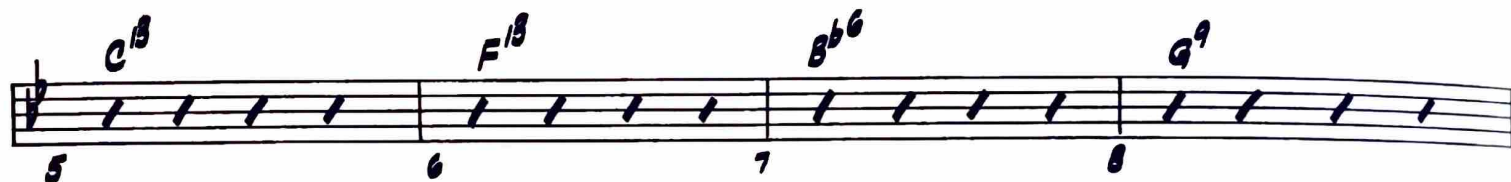


As Recorded On NICE 'N' EASY

## sugar valley

GUITAR

by SAMMY NESTICO

EASY SWING (♩ = 104)

GUITAR

25 *C<sup>9</sup>* *F<sup>7</sup> E<sup>7</sup> F<sup>7</sup>* *B<sup>b</sup>9<sup>9</sup>* *G<sup>7</sup> F<sup>#7</sup> G<sup>7</sup>*

29 *C<sup>13</sup>* *E<sup>7</sup> F<sup>7</sup>* *F/E<sup>b</sup> Dmi<sup>7</sup>* *A<sup>b</sup>9* *G<sup>13</sup>* *D<sup>b</sup>9*

33 *C<sup>13</sup> C<sup>9</sup>* *D<sup>b</sup>mi/G<sup>b</sup>* *Chi<sup>7</sup>/F* *F+<sup>7</sup>(<sup>b</sup>9)<sup>b</sup>*

37 *C<sup>9</sup>* *F<sup>9</sup>* *B<sup>b</sup>9<sup>9</sup>* *G<sup>9</sup>*

41 *C<sup>9</sup>* *F<sup>13</sup>* *B<sup>b</sup>9<sup>9</sup>* *Fmi<sup>9</sup>* *B<sup>b</sup>13*

45 *E<sup>b</sup>13* *A<sup>b</sup>13* *D<sup>b</sup>9<sup>9</sup>* *B<sup>b</sup>13* *B<sup>b</sup>7(<sup>b</sup>9)* *E<sup>b</sup>9*

50 *A<sup>b</sup>9* *D<sup>b</sup>9<sup>9</sup>* *G<sup>b</sup>9* *G<sup>9</sup>* **53** *C<sup>9</sup>*

54 *F<sup>7</sup> E<sup>7</sup> F<sup>7</sup>* *B<sup>b</sup>9<sup>9</sup>* *G<sup>7</sup> F<sup>#7</sup> G<sup>7</sup>* *C<sup>13</sup>* *E<sup>7</sup>*

58 *F<sup>7</sup>* *F/E<sup>b</sup> Dmi<sup>7</sup>* *A<sup>b</sup>9* *G<sup>13</sup>* *D<sup>b</sup>9* **61** *C<sup>7</sup>*

62 *D<sup>b</sup>mi/G<sup>b</sup>* *Chi<sup>7</sup>/F* *F+<sup>7</sup>(<sup>b</sup>9)<sup>b</sup>* **DIRECTED** **2** *B<sup>b</sup>MA<sup>9</sup>*

64-65 **Rit.** 66